



**AMERICAN SPECIALTIES, INC.**

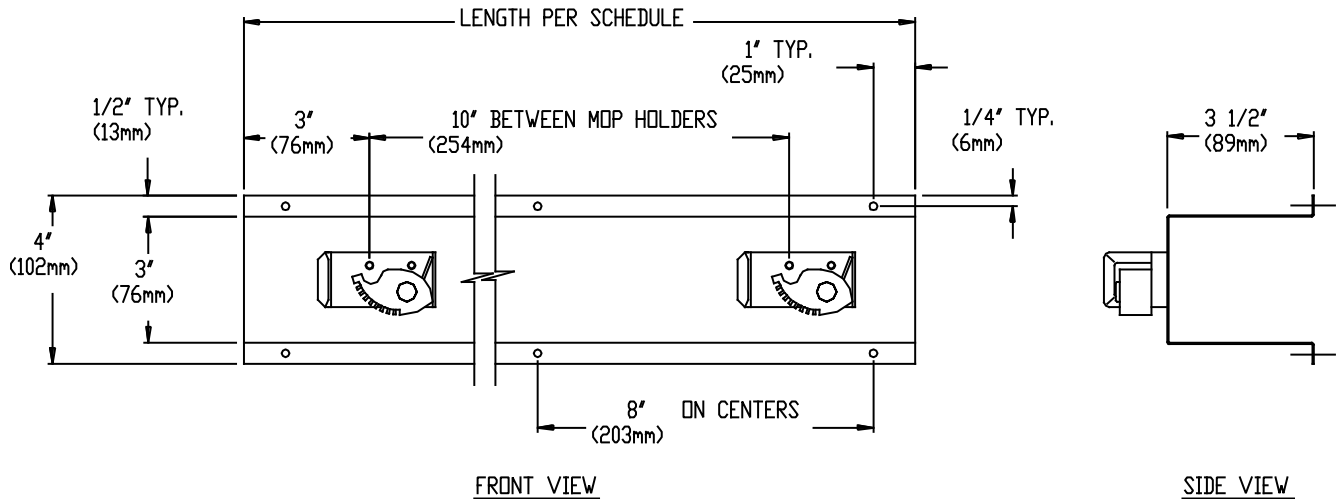
441 Saw Mill River Road, Yonkers, NY 10701 (914) 476-9000

MODEL No: 8215

ISSUED: 1-87

REVISED: 7-99

**MOP AND BROOM HOLDER RACK**



**STANDARD STOCK SIZES**

ASI MODEL N <sup>o</sup>	LENGTH	MOP HOLDER QUANTITY
8215-3	26" (660 mm)	3
8215-4	36" (914 mm)	4
8215-5	46" (1168 mm)	5

**SPECIFICATION**

Mop and Broom Holder Rack shall be fabricated of one-piece hi-hat channel 18-8 stainless steel, type 304, 20 gauge (.9mm) with N<sup>o</sup> 4 satin finish. Horizontal edges of hi-hat shall return 3-1/2" (89mm) to wall. Mop holder brackets shall be fabricated of cadmium plated steel and shall be ribbed for rigidity. Each mop holder shall have a pivoting spring loaded serrated rubber cam that shall hold round handles of 7/8" to 1-1/4" (22mm to 32mm) dia. wedged against ribbed clamp plate. Unit shall be surface mounted with screws supplied.

**Mop and Broom Holder Rack shall be Model N<sup>o</sup>8215-3 (or 8215-4 or 8215-5) as manufactured by American Specialties, Inc., 441 Saw Mill River Road, Yonkers, New York 10701-4913**

**INSTALLATION**

For general utility mount rack 70" (1778mm) above finished floor (AFF) from bottom of rack with N<sup>o</sup>10 self-tapping screws (supplied) through holes provided. For compliance with ADA Accessibility Guidelines, install unit so that top of rack is 54" (1372mm) maximum AFF if clear floor side reach access is provided or 48" (1219mm) maximum AFF if clear floor forward reach access is provided.

**OPERATION**

Mop or broom handle is pushed into grip-jaw of pivoting serrated rubber cam with upward motion until it seats behind rib on clamp plate. Spring holds cam against handle. Gravity holds mop clamped in position.

Accessory Specialties

AMERICAN DISPENSER

Desert Ray Products

WATROUS INC.